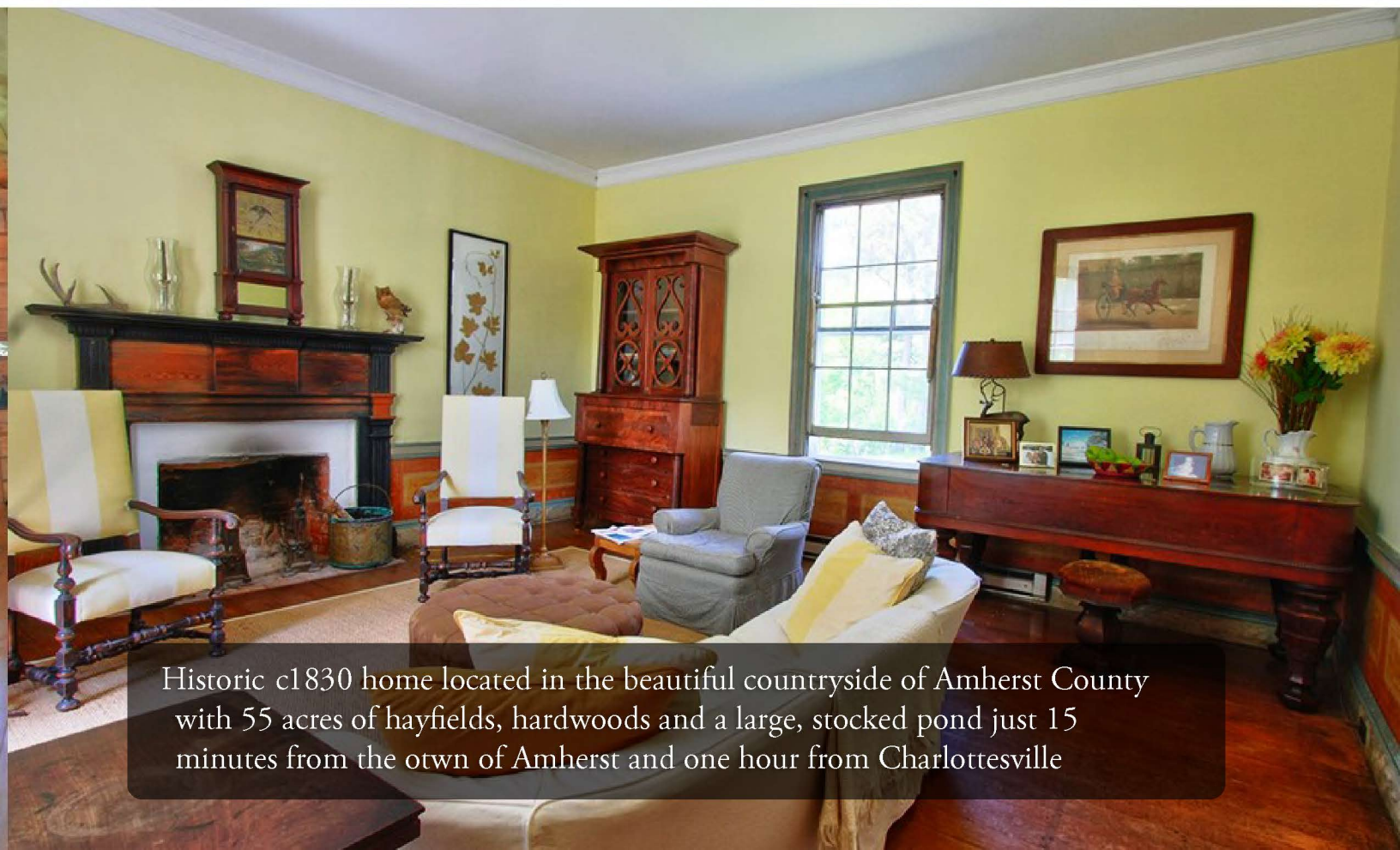
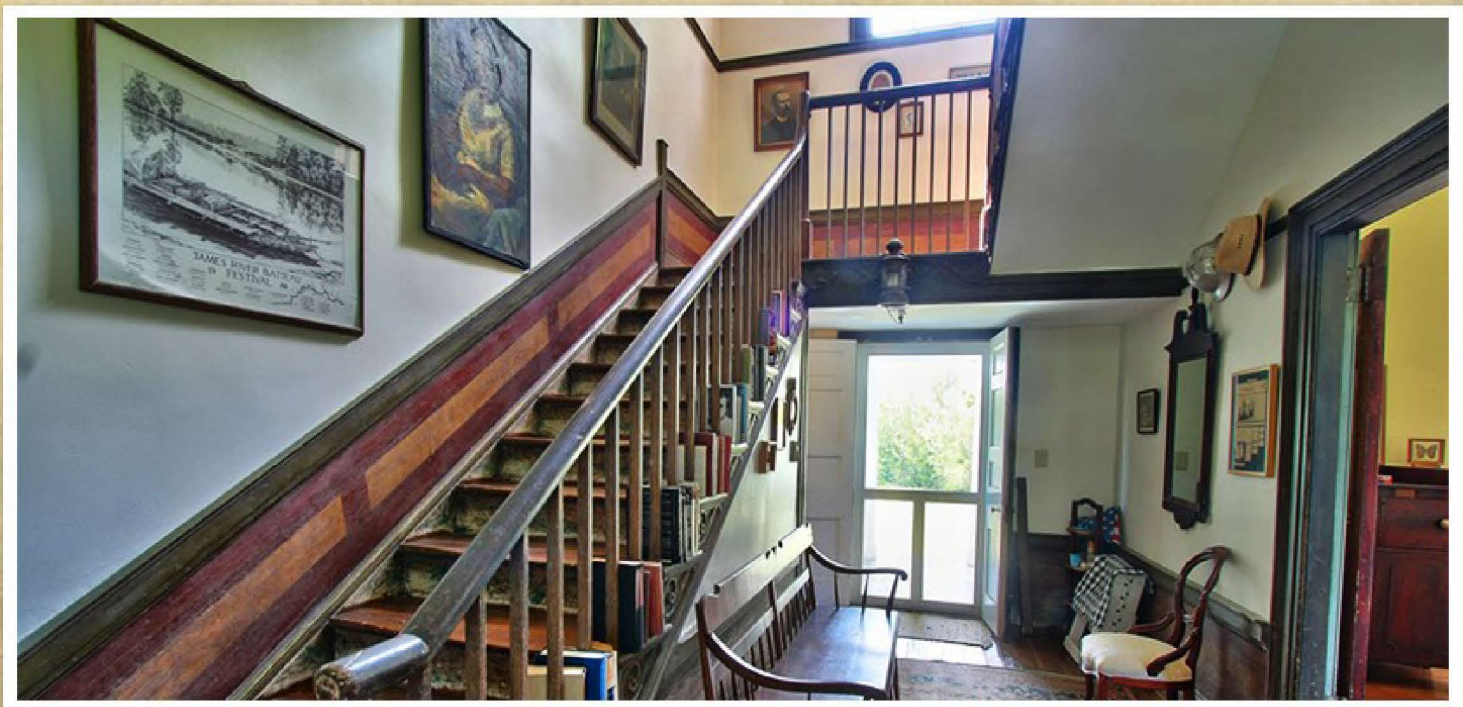
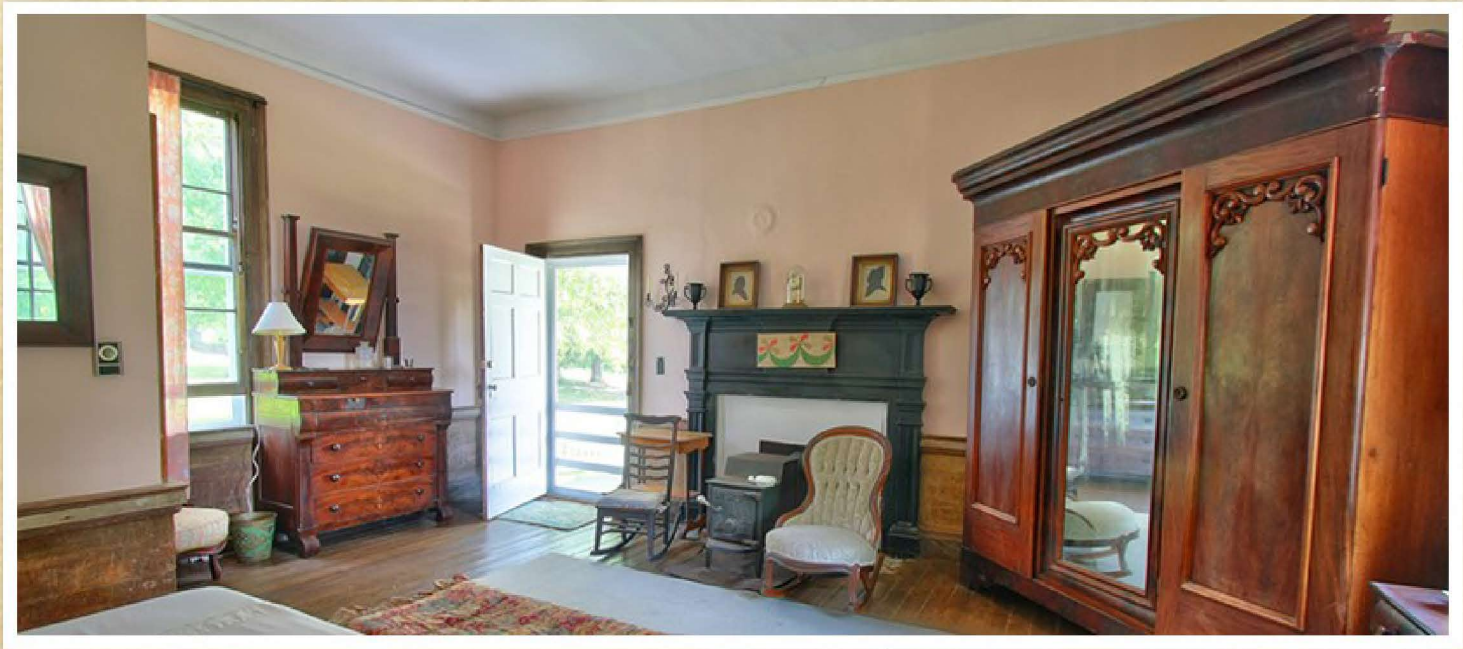


Rosedale



Historic c1830 home located in the beautiful countryside of Amherst County with 55 acres of hayfields, hardwoods and a large, stocked pond just 15 minutes from the town of Amherst and one hour from Charlottesville





c1830's Preserved Home

Well-preserved farmhouse with original decorative paint, hardware, 2 full updated baths and Gunite pool.

Includes a charming 1 bedroom, 1 full bath guest cottage, a "bunkhouse", and a historic cemetery.



